

Public Document Pack



**WOKINGHAM
BOROUGH COUNCIL**

Civic Offices
Shute End
Wokingham
RG40 1BN

Tel: 0118 974 6054
E-mail: democratic.services@wokingham.gov.uk

To:- All Board Members

WOKINGHAM BOROUGH WELLBEING BOARD - THURSDAY, 14TH FEBRUARY, 2019

I am now able to enclose, for consideration at the next Thursday, 14th February, 2019 meeting of the Wokingham Borough Wellbeing Board, the following updated report.

Agenda No Item

70. Update from Board members (Pages 3 - 6)

To receive updates on the work of the following Board members:

- Community Safety Partnership;
- Healthwatch Wokingham Borough;
- Place and Community Partnership and Voluntary Sector.

(30 mins)

Yours sincerely

Heather Thwaites
Interim Chief Executive

This page is intentionally left blank

Involve Community Services

Restructure update for WB Wellbeing board.

Philip Cook – General Manager

Introduction

Involve celebrates its 40th year as an organisation in 2019. Throughout the 40 years of operation there has always been a common thread of; communities, charities, groups, volunteers/ volunteering and generally making a positive contribution to the locality. This common thread is something involve still stands by today and will continue to long into the future.

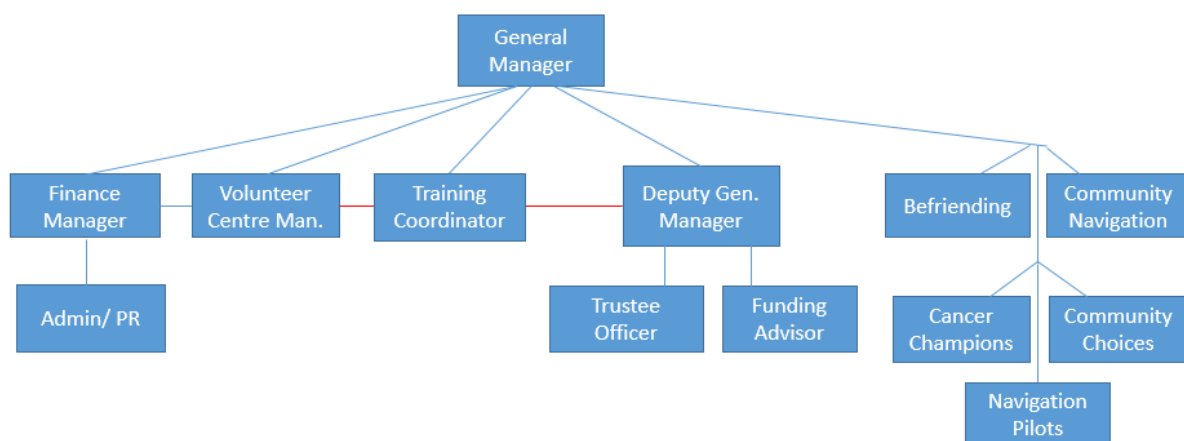
The core work delivered by involve is; development, support, training, funding advice and in Bracknell Forest only: acting as the local volunteer centre – supporting local charities and community groups. In addition to this involve acts as the voice of the sector, champions' charities and community groups and supports awareness raising of local issues. Involve also delivers the befriending scheme in Bracknell Forest and the Community Navigation Scheme in Wokingham.

Re-structure

Identified risks:

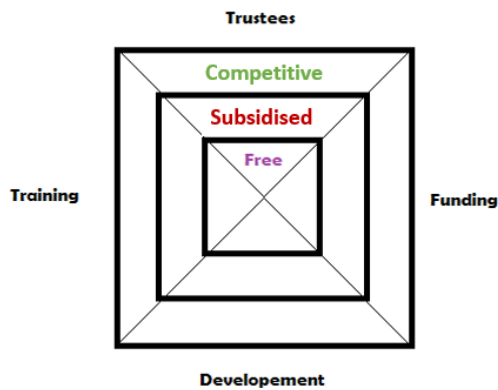
- Heavily reliant on core funding from the 2 borough councils
- Different core service delivery models in Wokingham Borough and Bracknell Forest
- Not focusing resources on primary needs of the local VCS*
- No sustainability plan in place

New restructure model:

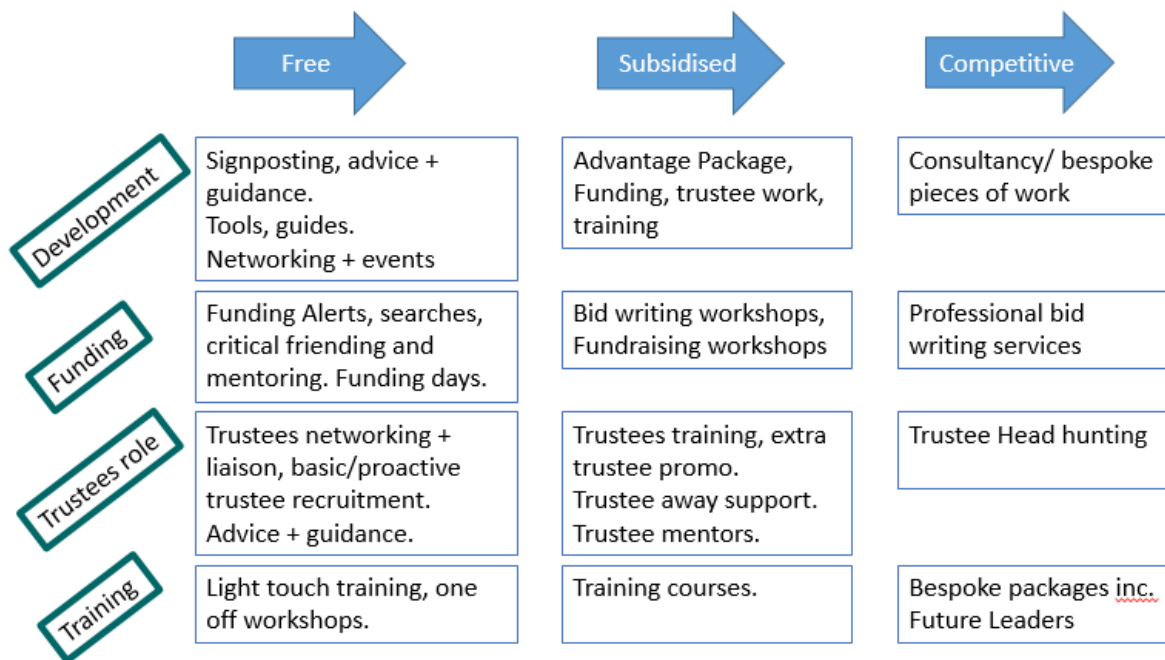


Following a redesign of the organisation focusing on the core services involve has streamlined and aligned what it does and how it operates. Going forward involve has one each of the following individuals covering both boroughs equally: Training Coordinator, Trustee Officer, Funding Advisor and Deputy General Manager. The plans and vision for this restructure were developed via involve's trustees and General Manager as well as researching equivalent models of delivery operational in other areas of the country, surveying a selection of the local VCS and also consulting with the CEO's of both Wokingham Borough and Bracknell Forest.

Alongside the restructure of staffing involve has reviewed its service offer. Involve already charges an attendance fee for the various training courses it offers so is offering enhanced services that fall into 3 bands; free, subsidised and Competitive/ Advanced therefore accessible to all groups, irrespective of size and maintaining the drive of empowering and enabling. Free: how to do it yourself (signposting, info and advice), Subsidised: we'll train you to be able to do it yourself and really well, Competitive: you can pay involve to do it for you.



Additional breakdown is as follows:



This new service model enables involve to offer more services to the voluntary and community sector alongside generating an income to support the future of the organisation.

Additional notes

The reorganisation directs charities and groups direct to the main service they need support with and involve can offer and expert in those areas to support them. On top of this involve can offer a wider range of support opportunities.

The Deputy General Manager will cover some of the boards and forums involve currently attends on behalf of the voluntary and community sector which are mostly all covered by the General Manager.

Involve will still deliver quarterly growth clubs (business development sessions for the VCS), Community Awareness Events (raising awareness of key subjects in communities across the area and using partners to maximise the impact of these) and will be re-introducing a Voluntary Sector Forum bi-annually to bring the whole sector together to share information, updates, encourage collaboration and innovative thinking – these events will include key speakers talking about important strategy/ policy changes and advancements.

Finally, involve will look to get more involved with:

- Community resilience initiatives
- Instigating community action at local levels
- Lead innovation sessions with multiple partners
- Encourage and support partnership opportunities
- Lead funding ideas sessions with partners

Time line

The new team have all started in their positions January/February 2019. The plan is they will be fully up and running asap and the launch of the new products, services and ways of working with involve will be rolled out by Spring.

Additional Services

The additional services delivered by involve including: Befriending, Community Choices, Community Navigation, Cancer Champions, the Navigation pilots and some Community Resilience work with the CSP are all unaffected by the core changes.

Conclusion

These changes will strengthen the voluntary and community sector as well as involve for the future. We know that one of our equivalent charities based in Sheffield has undergone a similar journey 4/5 years ago and now generate 50% of their income from paid for services for charities.

Philip Cook

8th February 2019

This page is intentionally left blank